

A multi-purpose aquaculture vessel designed with operational efficiency and productivity at its core.

Designed for maximum productivity and efficiency, our industry leading 20m aquaculture vessel boasts a substantial 105m² working deck, and a 20 tonne cargo capacity, which make it a perfect fit for a wide range of aquaculture operations. Additionally, the vessel's lightweight and corrosion-resistant aluminium construction maximises durability and environmental compatibility.

To further enhance sustainability, we recommend installing an advanced hybrid propulsion system supplied by Volvo and Danfoss, which offers increased energy efficiency and reduced emissions. However, this cutting edge vessel can be equipped with any choice of propulsion system that meets operational requirements - giving operators the freedom to choose conventional fuel, hybrid or fully electric systems.

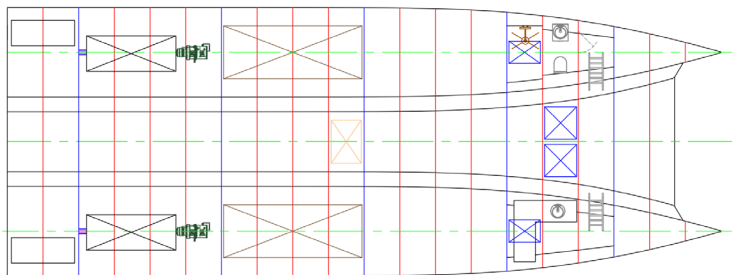
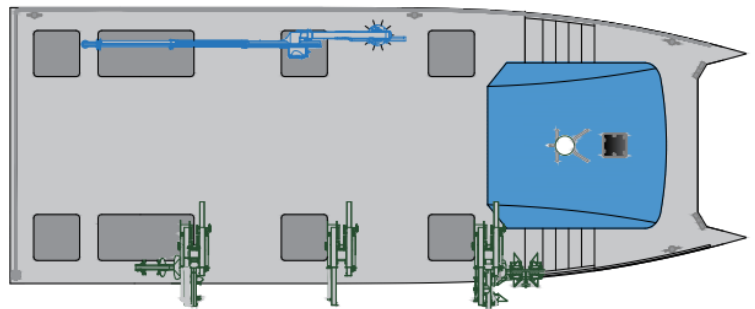
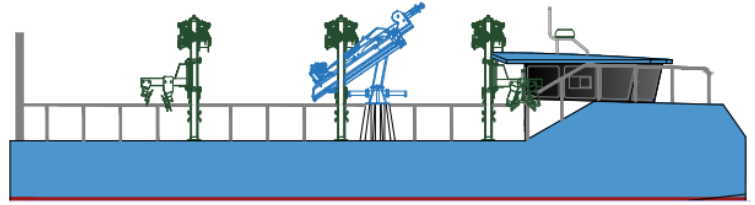
SNAPSHOT SPECIFICATION

Length	20m
Propulsion system	Operator's choice
Deck work area	105m ²
Material	Marine grade aluminium

This vessel has been designed to MCA Workboat Code Edition 2.

HULL STRUCTURE

Rule set	Lloyds SSC
Bottom plating	8mm
Topside plating	6mm
Main deck plating	5mm
Transom plating	6mm
Framing spacing	1000mm
Wheelhouse plating	4mm
Deck carrying capacity	1 t/m ²



AUXILIARY MACHINERY

Knuckle crane	7.5t.m crane (Manufacturer operator's choice)
Optional aquaculture equipment	3 x overhead winch davits fitted on the starboard side 1 x powered walking wheel fitted on starboard side 1 x idle wheel
Hydraulic power	PTO or electrohydraulic, depending on propulsion system

Ideal for a range of aquaculture operations, including:

- Mussel farming
- Seaweed farming and harvesting
- Fish farming
- General workboat use

